

# MFEL Localisation (BETA)

Jan 2017

The MFEL has some new functionality that is being developed for localisation. This allows the MFEL to perform the following tasks:

- Switch out video to a flash file held on the local drive.
- Add scrolling text to current video.
- Add an animated logo.
- Squeeze the active video down to reveal a background graphic.

This will allow for the MFEL to perform local functions such as blackouts.

---

## Required Files

To get the localisation working, you will need the following files (code versions may change of course). Please bear in mind that once this functionality becomes standard, most of this will not be required.

```
Software -
  Flash Installer - install-flashExtractor-1.00.00-001_CentOS-7.1.1503.run
  MFEL Software - envivio-muse-7.00.04.851.el7.x86_64.run
Flash Files -
  bannerWithVideo1080-50fps.swf
  bannerWithVideo720-50fps.swf
  crawler1080-50fps.swf
  crawler2160-50fps.swf
  crawler720-50fps.swf
  logo1080-50fps.swf
  logo720-50fps.swf
  squeeze1080-50fps.swf
  squeeze2160-50fps.swf
  squeeze720-50fps.swf
Configuration Files -
  config(18).xml
  8080.conf
  8181.conf
```

---

## Preparation

Copy all the files listed in the 'Required Files' section above to the MFEL /home folder. You can either mount a USB Stick and copy them from there, or use WinSCP or MobaXterm to copy the files using a Windows PC and SSH.

Once the files are in the /home location, we need to set the file permissions, mainly we need to grant execute rights for the two installers.

From the command line, assuming you are in the home folder, use:

```
chmod 755 *.run
```

If you do a directory listing 'll', you should see the following:

```
-rw-r--r--. 1 root root 1691 Jan 20 06:04 8080.conf
-rw-r--r--. 1 root root 1880 Jan 20 06:04 8181.conf
-rw-r--r--. 1 root root 29777 Jan 20 06:04 config (18).xml
-rwxr-xr-x. 1 root root 178869366 Jan 20 05:53 envivio-muse-7.00.04.851.el7.x86_64.run
drwxr-xr-x. 2 root root 4096 Jan 23 00:56 Flash
-rwxr-xr-x. 1 root root 23285640 Jan 20 05:52 install-flashExtractor-1.00.00-001_CentOS-7.1.1503.run
```

## install Flash Software

As the files that will be used for the localisation are all in Flash format (.swf) we need to install the Flash software on the MFEL.

From the command line, use:

```
./install-flashExtractor-1.00.00-001_CentOS-7.1.1503.run
```

---

## Install MFEL Software

For this demo, we are using specific software code. As I have said previously, this code is subject to change, and eventually will be part of the standard MFEL build.

From the command line, use:

```
./envivio-muse-7.00.04.851.el7.x86_64.run
```

---

## License the Unit

You will have to speak to Support for a License. There is no special licensing for the localisation, you just need a standard MFEL license.

---

## Copy Files to Correct Locations

We need to ensure that the correct files are in the correct locations for this to work. Copy the files listed below to their relevant locations.

Config Files:

```
Copy 8080 and 8181 to /opt/envivio/data/muse/conf/automationsystem (overwrite existing files)
sudo cp *.conf /opt/envivio/data/muse/conf/automationsystem
```

Copy flash files to correct location, navigate to the folder where the Flash files (.swf) are held

```
cp *.swf /opt/envivio/mnt/automation

bannerWithVideo1080-50fps.swf
bannerWithVideo720-50fps.swf
crawler1080-50fps.swf
crawler2160-50fps.swf
crawler720-50fps.swf
logo1080-50fps.swf
logo720-50fps.swf
squeeze1080-50fps.swf
squeeze2160-50fps.swf
squeeze720-50fps.swf
```

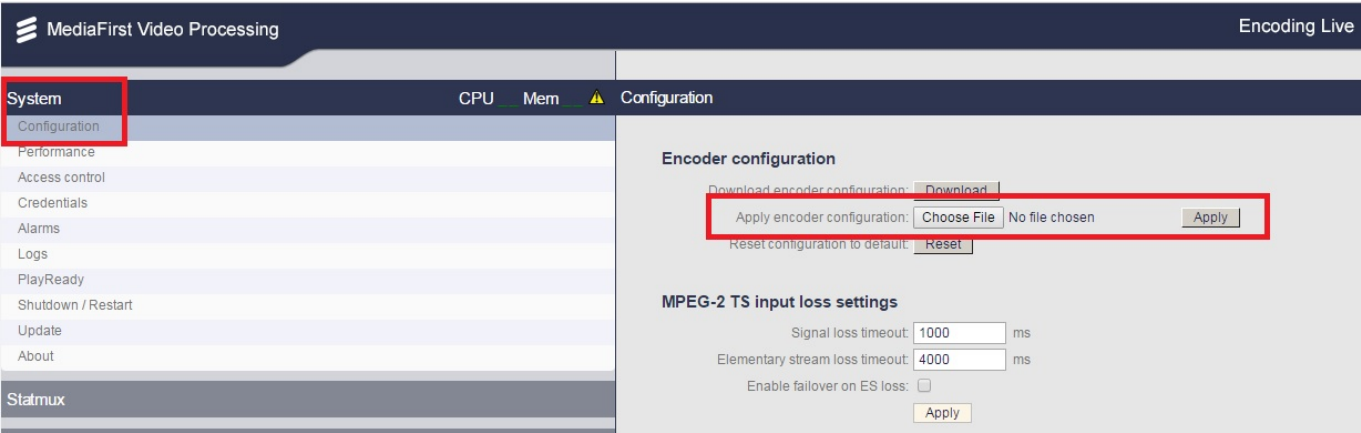
If you look at the Flash files, they are all 50fps, some are full HD 1080, some 720 and there are a couple of UDH also. So with these files we cannot demo this functionality in SD (that I am aware of).

Reboot the encoder

Configure the MFEL Encoder

There is a pre-build configuration file that we can use to configure the encoder, this will add a two regional services. To configure this upload the config(18).xml to the MFEL.

From the web interface, navigate to System, Configuration.

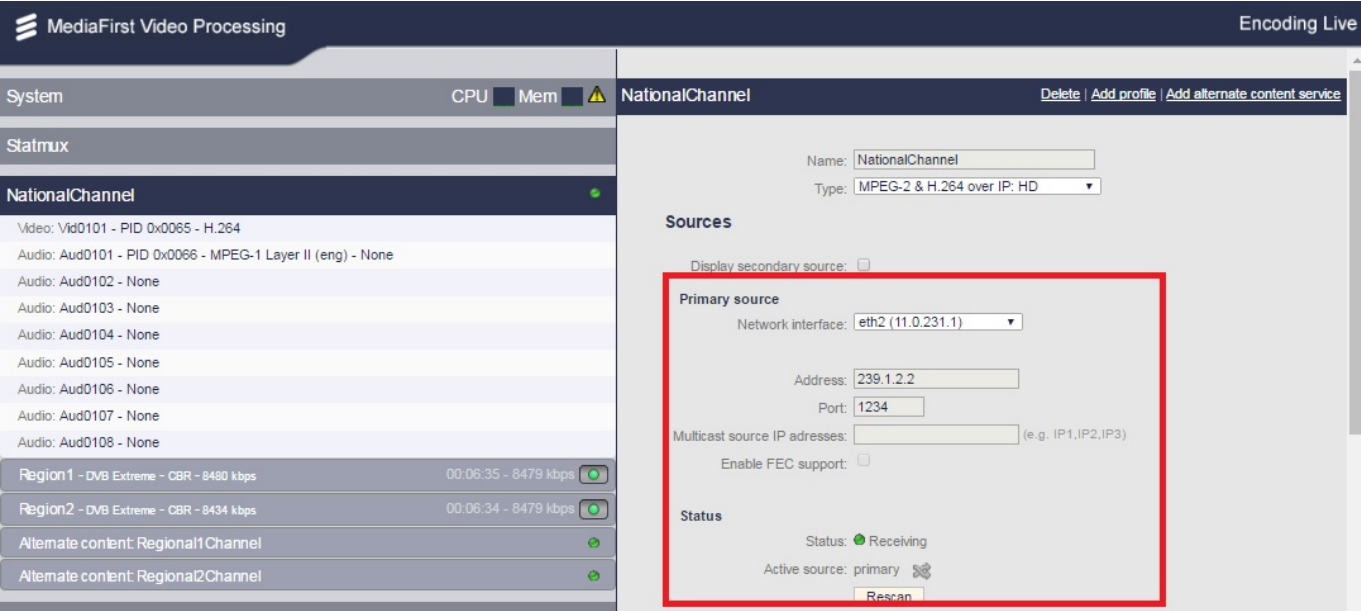


Use the 'Choose File' to select the file to be uploaded and click 'Upload'.

Once uploaded, we can change the Input and Output multicasts and we are ready to test.

Default Configuration

The configuration file we loaded (config (18).xml) has a service with two regions. There are a few tests that we can do with this default configuration. Before starting, the **National** and both **Regional** services need to be locked to a valid IP Input (so that's three services coming in).



If you want to see regional service switching, each of the three multicasts (National, AlternativeRegional1 and AlternativeRegional2) need to be different content, or you won't see the switch. If you just want to test the effects (Crawler, Squeeze and Banner) then they can all be the same.

**WARNING!!!** Unless all three services are locked, none of the services will start.

Automation Simulation Simulator

There is a separate page that allows the demonstration of the regional switching that is found on a separate port. The page can be found at:

```
MFEL_IPAddress:8080
MFEL_IPAddress:8181
```

These are the two config files that were uploaded earlier.

192.168.201.231:8080

Envivio.

Connection

disconnect

Mode: SCTE 104 SCTE 30 port: 5168 SCTE 104 port: 5167 DPI ID: 1 UMP ID: Region1Channel Channel name: Region1Channel

Automation

apply clear all batch run

Select input

seq num: 1 input ID: Region1Id

event ID: 0 batch run: ☐ delay (ms): 1000

run remove

Select input

seq num: 1 input ID: NationalId

event ID: 0 batch run: ☐ delay (ms): 1000

run remove

Insert template

seq num: 1 material ID: logo1080-50fps.swf duration: 00:00:59.00 layer: 1

field namefield value

add

event ID: 0 batch run: ☐ delay (ms): 0

run remove

Insert template

seq num: 2 material ID: crawler1080-50fps.swf duration: 00:00:59.00 layer: 2

field namefield value

SWF\_TEXT\_01 HELLO WORLD

add

event ID: 0 batch run: ☐ delay (ms): 0

run remove

Insert template

seq num: 3 material ID: squeeze1080-50fps.swf duration: 00:00:59.00 layer: 3

field namefield value

add

event ID: 0 batch run: ☐ delay (ms): 0

run remove

Insert template

seq num: 4 material ID: bannerWithVideo1080-50fps.swf duration: 00:00:59.00 layer: 4

field namefield value

add

event ID: 0 batch run: ☐ delay (ms): 0

run remove

add

Above are the different possibilities for the regionalisation options.

For this page to work, you must click the 'Connect' button in the top right of the Window. If for any reason the 'envivio-muse' service is restarted, or the encoder is restarted, you will have to reconnect this page as it does not start automatically (yet).

Switching Regional/National Programme

The first two sections of the automation page are for the switching to, and switching back from the National / Regional programs.

http://cameraangle.co.uk/

Printed on 2024/05/09 16:56

Automation

applyclear allbatch run

Select input

seq num1input IDRegion1Id

event ID0batch runcheckboxdelay (ms)1000runremove

Select input

seq num1input IDNationalId

event ID0batch runcheckboxdelay (ms)1000runremove

To switch a service just click the 'Run' button in the relevant section.

**Warning!!!** Do not click **remove** The remove function removes the settings (some users thought it removed or 'stopped' regional switch, like a revert function).

Using the OnScreen Tools

The rest of the sections are for on screen effects.

Insert template

seq num1material IDlogo1080-50fps.swfduration00:00:59.00layer1field namefield valueadd

event ID0batch runcheckboxdelay (ms)0runremove

Insert template

seq num2material IDcrawler1080-50fps.swfduration00:00:59.00layer2field nameSWF\_TEXT\_01field valueHELLO WORLDXadd

event ID0batch runcheckboxdelay (ms)0runremove

Insert template

seq num3material IDsqueeze1080-50fps.swfduration00:00:59.00layer3field namefield valueadd

event ID0batch runcheckboxdelay (ms)0runremove

Insert template

seq num4material IDbannerWithVideo1080-50fps.swfduration00:00:59.00layer4field namefield valueadd

event ID0batch runcheckboxdelay (ms)0runremove

The four sections here are:

Logo	Displays a Flash logo, can be static or animated
Crawler	Displays a ticker tape style message on the screen
Squeeze	Squeezes the active video down to approx 1/5 size to reveal a backdrop
Banner	Displays a Banner

Exactly the same as the regional and national selection, just click the 'Run' button to start. These are a once only event. So if you use say the Crawler. The text will crawl along the screen, then the event has ended, there is no concept of switching back from that mode.

From:  
<http://cameraangle.co.uk/> - WalkerWiki - [wiki.alanwalker.uk](http://wiki.alanwalker.uk)

Permanent link:  
[http://cameraangle.co.uk/doku.php?id=wiki:mfel\\_localisation](http://cameraangle.co.uk/doku.php?id=wiki:mfel_localisation)

Last update: 2023/03/09 22:35