

Putty Access

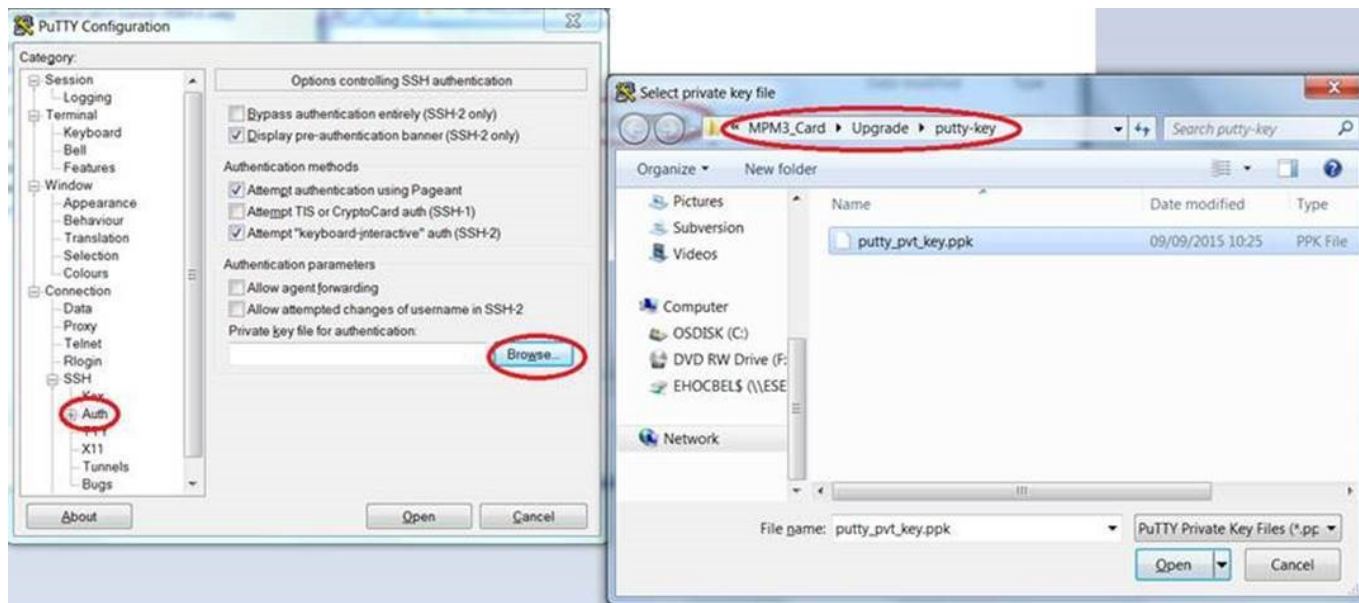
Oct 2017

Unlike previous products, to access the C2 via SSH, you need to use a generated key in Putty. You can download Putty and the Key [here](#).

- 1) Ssh into the chassis using putty (unzip putty.zip attached into putty.exe)
- 2) Login into the unit

Session> Login> Set the IP address of the unit

Connection>SSH>Auth (putty_pvt_key.ppk attached) Please DO NO SHARE this ppk file to anyone outside E/!



- 3) Login: root

From:
<http://cameraangle.co.uk/> - WalkerWiki - wiki.alanwalker.uk

Permanent link:
http://cameraangle.co.uk/doku.php?id=putty_access

Last update: 2023/03/09 22:35

