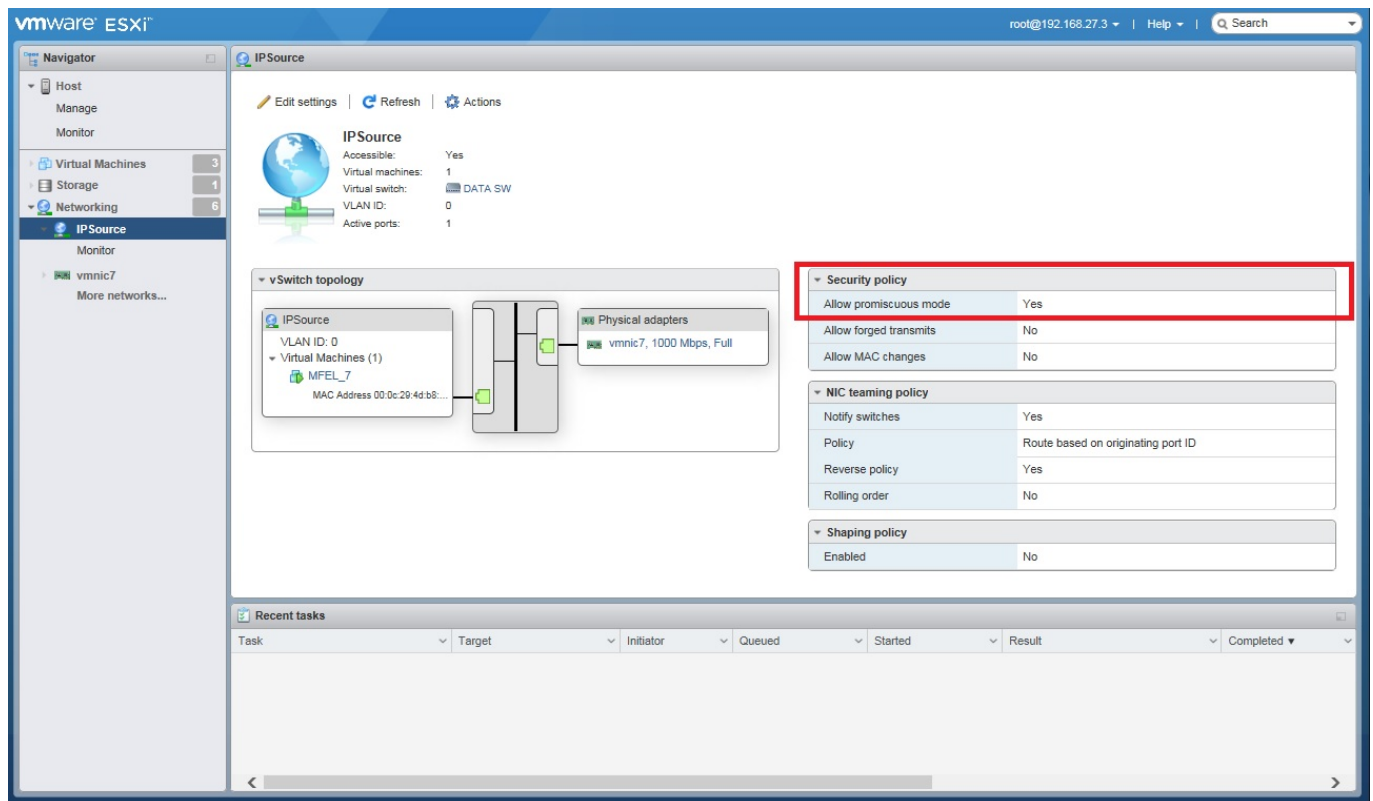


Promiscuous Mode

Jul 2017

This setting caught me out when I was trying to use tcpdump to capture some multicast traffic. Normally, the capture service (in this case tcpdump) puts the interface in to 'Promiscuous' mode, but I was still not able to capture any multicast traffic.

I used the ESXi web interface to edit the Port Group to enable Promiscuous mode manually.



After this, tcpdump was able to see the incoming multicasts.

From:
<http://cameraangle.co.uk/> - WalkerWiki - wiki.alanwalker.uk

Permanent link:
http://cameraangle.co.uk/doku.php?id=promiscuous_mode&rev=1500364258

Last update: 2023/03/09 22:35

