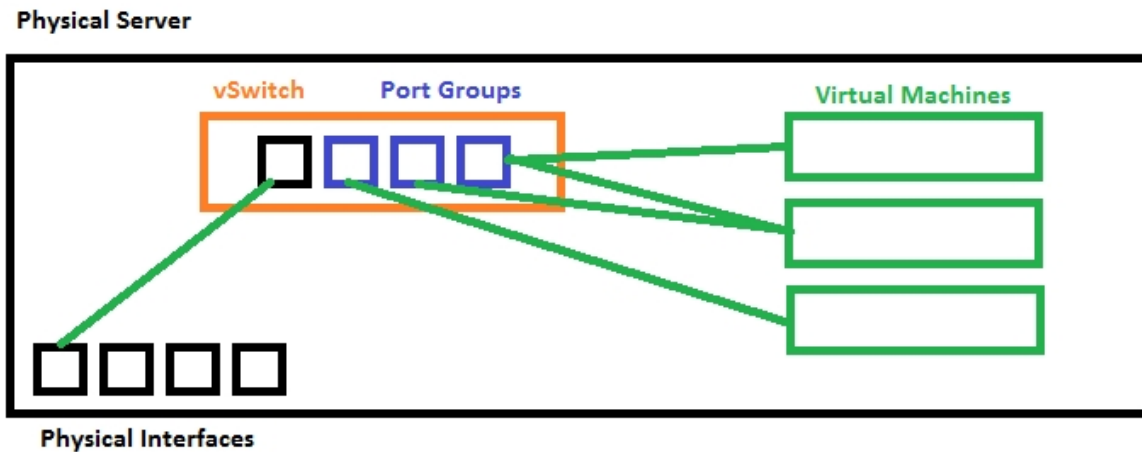


Create vSwitch

Jul 2017

What is a vSwitch in VMWare

Remember, a vSwitch is a software switch that you add virtual ports to, those virtual ports are used by your Virtual Machines. A vSwitch is associated with a physical port on your server. A vSwitch allows several Virtual Machines to share (if required) a single physical interface.



Create vSwitch

Log in to ESXi web gui.

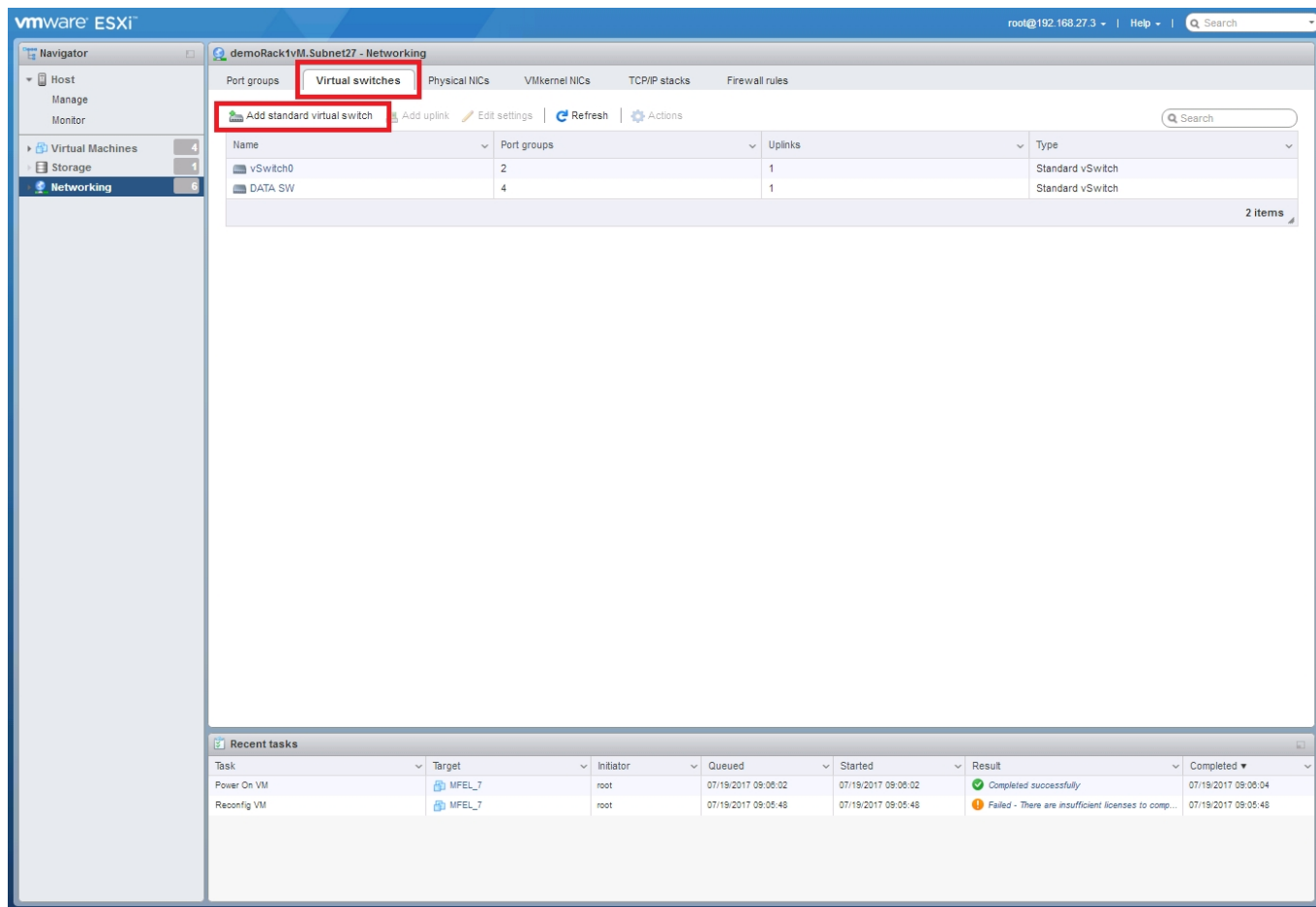
The screenshot shows the VMware ESXi interface for configuring networking on a host named 'demoRack1vM.Subnet27'. The 'Physical NICs' tab is selected, displaying a table of 12 virtual network interface cards (vmnic0 to vmnic11). The 'Networking' link in the left-hand pane is highlighted. The 'vmnic8' row is highlighted with a red box.

Name	Driver	MAC address	Auto-negotiate	Link speed
vmnic0	bnx2	e4:11:5b:ec:cd:c8	Enabled	100 Mbps, full duplex
vmnic1	bnx2	e4:11:5b:ec:cd:ca	Enabled	100 Mbps, full duplex
vmnic10	igbn	f4:ce:46:a9:33:be	Enabled	Link down
vmnic11	igbn	f4:ce:46:a9:33:bf	Enabled	Link down
vmnic2	bnx2	e4:11:5b:ec:cd:d0	Enabled	100 Mbps, full duplex
vmnic3	bnx2	e4:11:5b:ec:cd:d2	Enabled	Link down
vmnic4	igbn	f4:ce:46:a9:33:18	Enabled	Link down
vmnic5	igbn	f4:ce:46:a9:33:19	Enabled	Link down
vmnic6	igbn	f4:ce:46:a9:33:1a	Enabled	Link down
vmnic7	igbn	f4:ce:46:a9:33:1b	Disabled	1000 Mbps, full duplex
vmnic8	igbn	f4:ce:46:a9:33:bc	Disabled	1000 Mbps, full duplex
vmnic9	igbn	f4:ce:46:a9:33:bd	Enabled	Link down

In the left hand pane, click the **Networking** link.

From the main page, select **Physical NICs**. You should have a page similar to the one above where all of your physical interfaces are listed. It is important to check these first because you can check which interfaces you have, and which are connected. Remember which interface from this list you will use.

At the top of the page, select **Virtual Switches**.



Here we can see any vSwitches that have already been created (vSwitch0 will be there by default, and is used by the management interface of VMWare).

Click **Add standard virtual switch**.

Add standard virtual switch - Data_Network

Add uplink

vSwitch Name: Data_Network

MTU: 1500

Uplink 1: vmnic8

Link discovery: Click to expand

Security: Click to expand

Add Cancel

A pop up will open to enter some data. We need to specify the following:

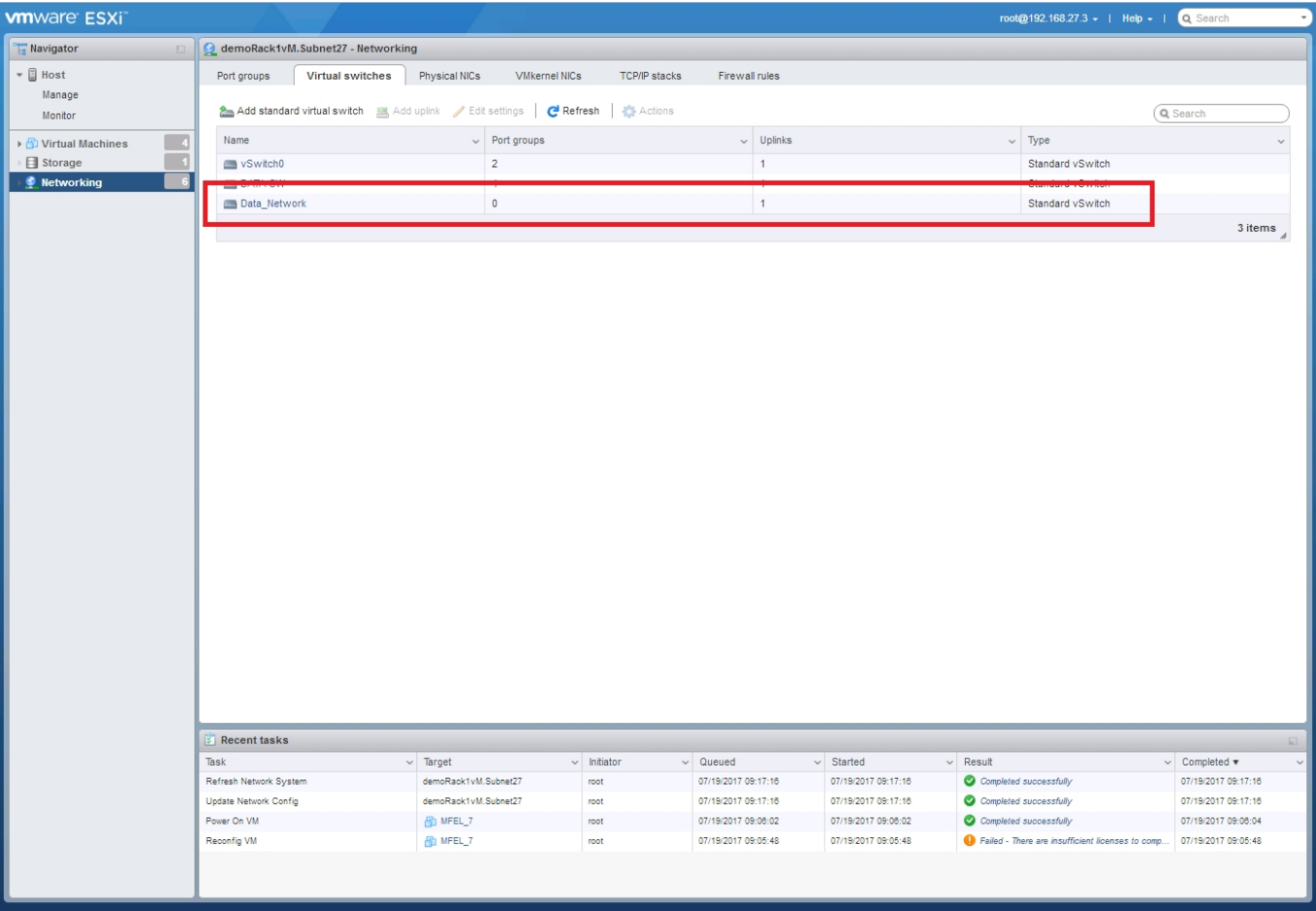
vSwitch Name: Any name you want, I have used Data_Network.

MTU: Unless you have a good reason, leave this at 1500

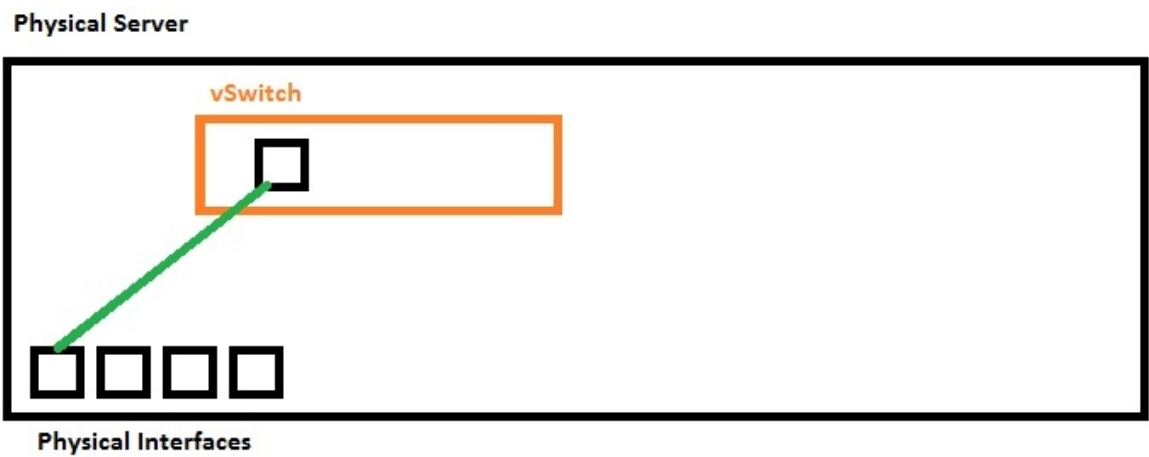
Uplink1: This is a drop down list, select the correct physical server interface.

Click **Add**.

You will now see your vSwitch listed in the main Networking page.



We have now created a vSwitch, and looking at our architecture, we can see below what we have completed.



The next step would be to add some **Port Groups**.

From:
<http://cameraangle.co.uk/> - WalkerWiki - wiki.alanwalker.uk

Permanent link:
http://cameraangle.co.uk/doku.php?id=create_vswitch

Last update: 2023/03/09 22:35