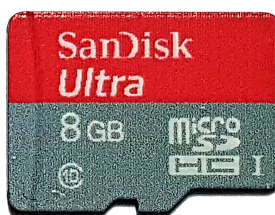
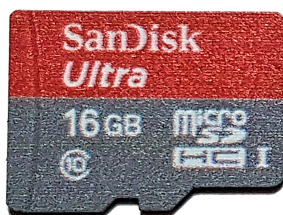


# Copy Larger SD Card to Smaller SD Card

Jan 2017



In this example I am going to copy the contents of a 16Gb SD Card, to an 8Gb SD Card. This will of course only work if your 16Gb SD card has at least 8Gb of free space.

I had a situation where I had created a project, using a 16Gb card and realised that even a 4Gb SD Card was enough, so after many frustrating hours I managed to get the contents to another smaller card, and thought I would document the process.

---

## What you will require

For this process, I used the following:

A Windows PC with SD Formatter and Win32 Disk Imager (see this link [here](#) ) A Linux PC (had Linux Mint on, so still Debian based) with gparted. Larger and smaller SD Cards and a reader.

You can mix and match your own method and hardware using this guide. This is not necessarily the best method, but it is the first method I found that worked for me.

-----  
**BEFORE YOU START** use the tools on this page [here](#) to **BACKUP YOUR SD CARD** so you don't lose any data.  
-----

---

## Check Source SD Card

While in your Raspberry Pi, check how much free space you have on your SD Card. Remember, my example is copying a 16Gb card to an 8Gb card, so I need at least 8Gb free.

From the command line, use the following:

```
df -h
```

This gives the output:

Filesystem	Size	Used	Avail	Use%	Mounted on
/dev/root	15G	1.1G	14G	8%	/
devtmpfs	214M	0	214M	0%	/dev
tmpfs	218M	0	218M	0%	/dev/shm
tmpfs	218M	4.4M	213M	3%	/run
tmpfs	5.0M	4.0K	5.0M	1%	/run/lock
tmpfs	218M	0	218M	0%	/sys/fs/cgroup
/dev/mmcblk0p1	63M	21M	43M	34%	/boot

As we can see from the line **/dev/root 15G 1.1G 14G 8%** / this SD Card which is a reported size of 15Gb has 14Gb free. So I have plenty of space to shrink this card by.

## Shrink Existing Partition

Most Pi Raspbian SD Cards that I have seen contain two partitions:

- Boot - Contains the boot files
- Ext4 - Contains the OS and Data files

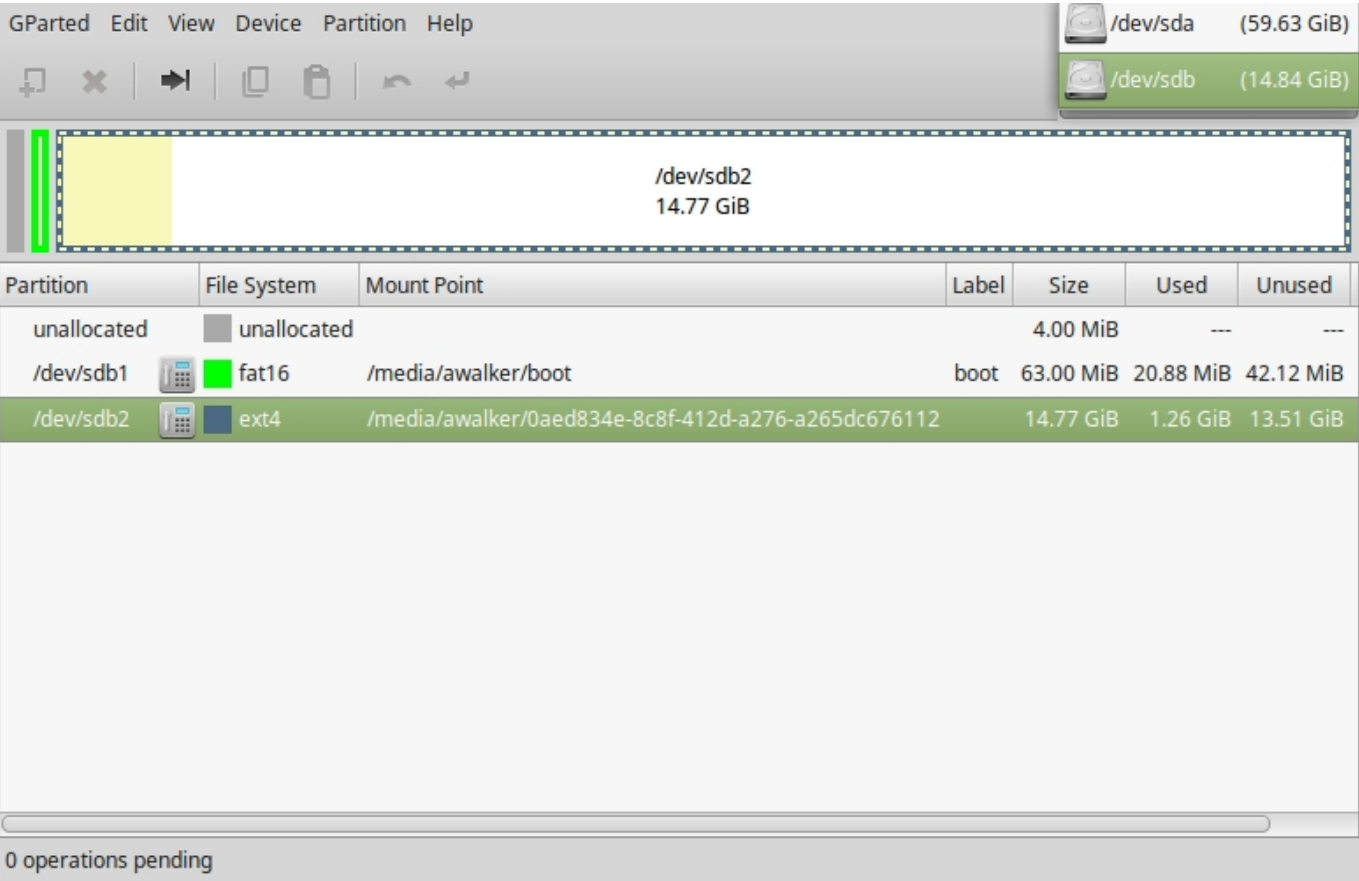
It is the Ext4 partition that we need to shrink. Unfortunately, there is no tool that I know that will shrink this partition while it is mounted. When I say shrink, I mean move any data that exists there and shrink. My first attempt to shrink the partition I used 'parted'. But this just shrank the partition without preserving any data.

If you had another RPi SD Card, you could do this from the Pi, but I just found it simpler by using a Linux PC. If you don't have a computer with Linux on it, just use one of the live CD/USB images to temporarily boot your computer to Linux.

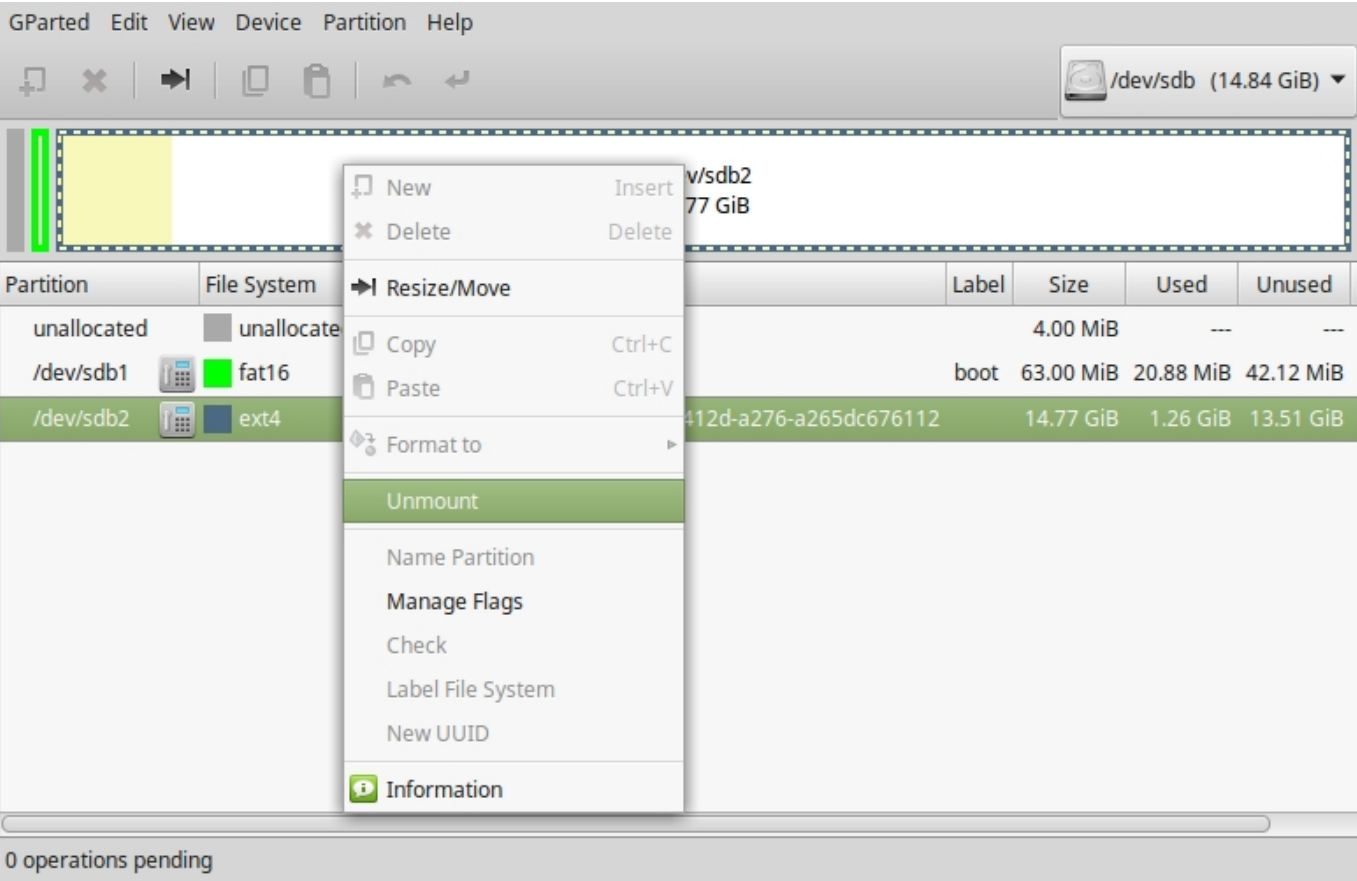
On the Linux computer, you need to run gparted (you may have to install it, you will have to google that because it's not covered here, suffice to say that will take you around 60 seconds).

Once gparted is up and running, with your source SD Card inserted check the following:

Ensure that the correct storage device is selected (don't delete your hdd partitions, or it's going to be a long day).

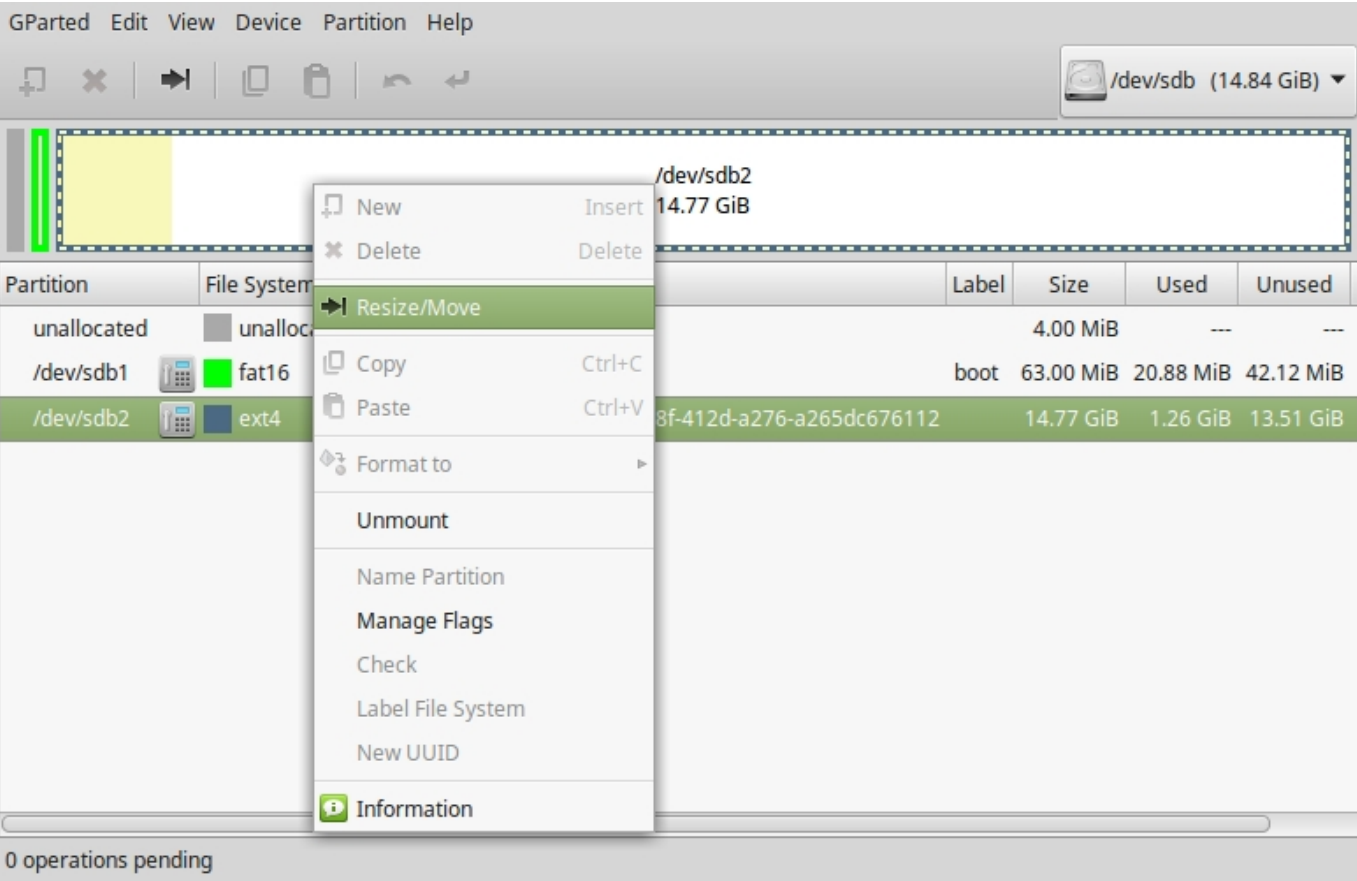


Ensure that the partitions are un-mounted before you start, or you won't have the option to resize.



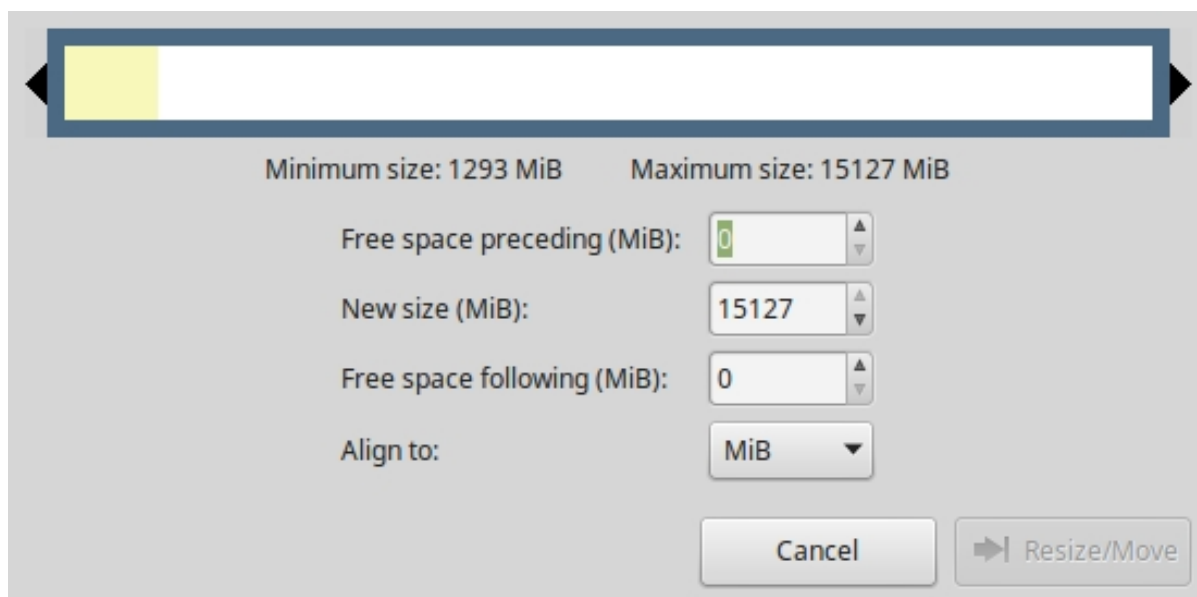
Now it's time to resize your partition.

On the EXT4 partition (we won't do anything to the boot partition) right click and select the Resize/Move option.



Now we have a resize window for our partition. You can set the size by dragging from the right (don't drag from the left) or by typing in the value of the new size (say 2GB = 2048). I am reducing my partition to 2GB because then it will fit on almost any card.

Even if you are writing the partition back to say an 8Gb card, it's worth using as little space as possible as this makes your backups smaller and faster, and the restore process is quicker too.



Minimum size: 1293 MiB      Maximum size: 15127 MiB

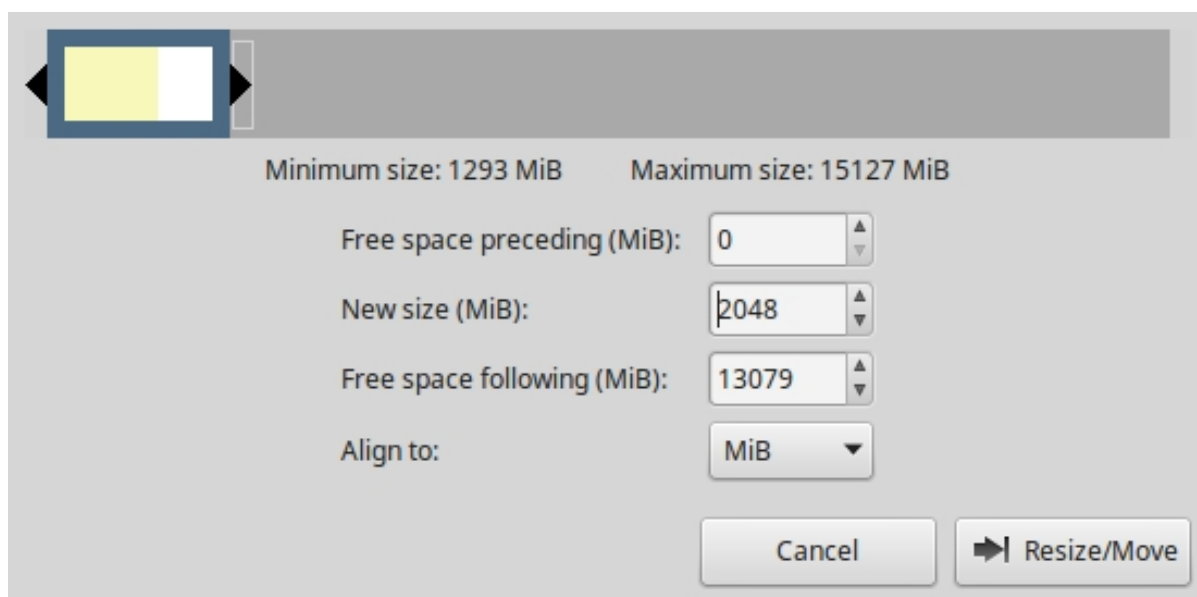
Free space preceding (MiB):

New size (MiB):

Free space following (MiB):

Align to:

Below you can see where the partition has been dragged down to 2GB.



Minimum size: 1293 MiB      Maximum size: 15127 MiB

Free space preceding (MiB):

New size (MiB):

Free space following (MiB):

Align to:

Click Resize/Move to set the changes.

Before the changes are committed, you have to click the Apply All Operations arrow at the top of the gparted interface.

The screenshot shows the GParted application window. The top menu bar includes 'GParted', 'Edit', 'View', 'Device', 'Partition', and 'Help'. Below the menu is a toolbar with icons for creating, deleting, moving, copying, pasting, and undoing. On the right, a dropdown menu shows the selected device: '/dev/sdb (14.84 GiB)'. The main area displays a disk layout with three partitions: a small unallocated space (4.00 MiB), /dev/sdb1 (63.00 MiB, fat16, /media/awalker/boot), and /dev/sdb2 (2.00 GiB, ext4). A large unallocated space of 12.77 GiB is shown at the end of the disk. A yellow tooltip 'Apply All Operations' is hovering over the 12.77 GiB unallocated space. Below the disk layout is a table with the following columns: Partition, File System, Mount Point, Label, Size, Used, Unused, and Flags.




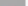
Partition	File System	Mount Point	Label	Size	Used	Unused	Flags
unallocated	unallocated			4.00 MiB	---	---	
/dev/sdb1	fat16	/media/awalker/boot	boot	63.00 MiB	20.88 MiB	42.12 MiB	boot, lba
/dev/sdb2	ext4			2.00 GiB	1.26 GiB	755.00 MiB	
unallocated	unallocated			12.77 GiB	---	---	

At the bottom of the window, a status bar indicates '1 operation pending'.

Accept the confirmation and the changes will be made.

## Backup the SD Card

Now we can backup the SD Card. For this we will use a utility called 'dd' which is installed on Linux by default.

unallocated		unallocated	4.00 MiB	---	---
/dev/sdb1		fat16 /media/awalker/boot boot	63.00 MiB	20.88 MiB	42.12 MiB boot, lba
/dev/sdb2		ext4	2.00 GiB	1.26 GiB	755.00 MiB
unallocated		unallocated	12.77 GiB	---	---

By default, dd will backup the entire SD card, whether it is part of a partition or not (so a 16Gb SD Card will produce a 16Gb file, that won't fit on my 8Gb destination SD Card).

We can tell the dd tool to only partition so far, but we need to know how much space we have used on the card. We know that our partition is 2048Mb, and the boot partition is nearly 700Mb, so for safety, I am going to use 2200Mb.

From the command line, use the following:

```
sudo dd if=/dev/sdb of=~/.rpi/all.img bs=1M count=2200
```

for me this gives the result:

```
2200+0 records in
2200+0 records out
2306867200 bytes (2.3 GB, 2.1 GiB) copied, 137.197 s, 16.8 MB/s
```

```
sudo dd if=/dev/sdb of=~/.rpi_all.img bs=1M count=2200
```

Where /dev/sdb is the SD Card (don't use the SDB1, SDB2 etc)

rip\_all.img is the output file

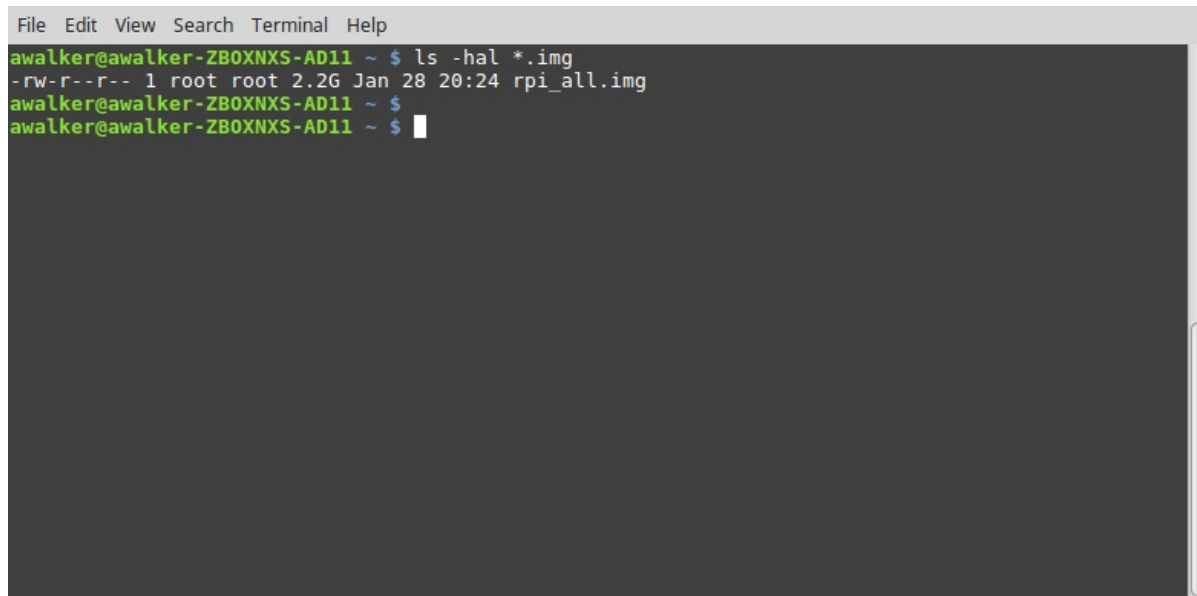
count=2200 is telling dd to stop after 2200Mb.

~/ means folder you are in (PWD) to save you typing the entire path.

From the command line, use the following to check the file size.

```
ls -hal *.img
```

You should see the file you created called rpi\_all.img. The filesize should be 2.2GB (2200Mb)



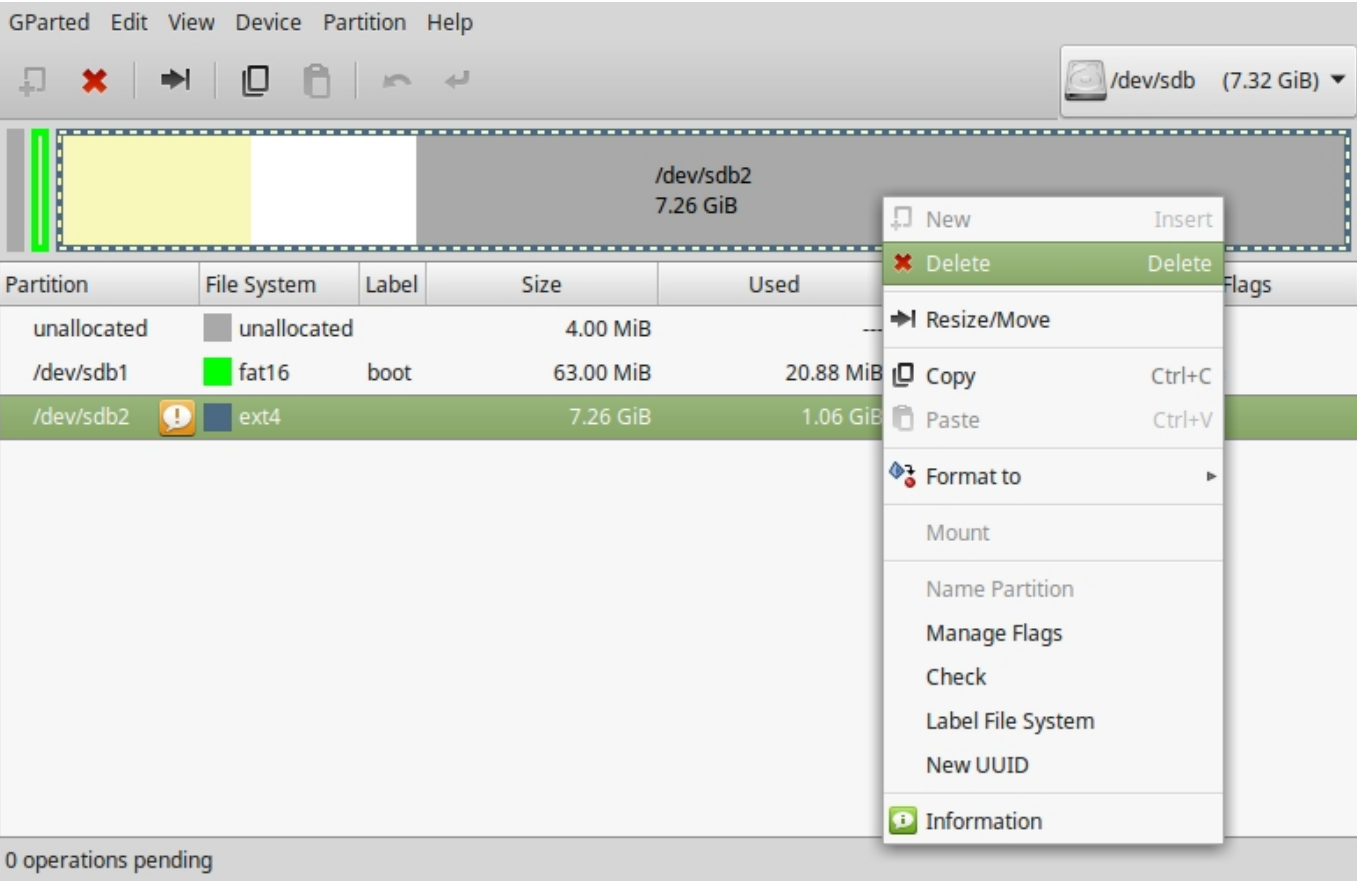
```
File Edit View Search Terminal Help
awalker@awalker-ZBOXNXS-AD11 ~ $ ls -hal *.img
-rw-r--r-- 1 root root 2.2G Jan 28 20:24 rpi_all.img
awalker@awalker-ZBOXNXS-AD11 ~ $
awalker@awalker-ZBOXNXS-AD11 ~ $
```

---

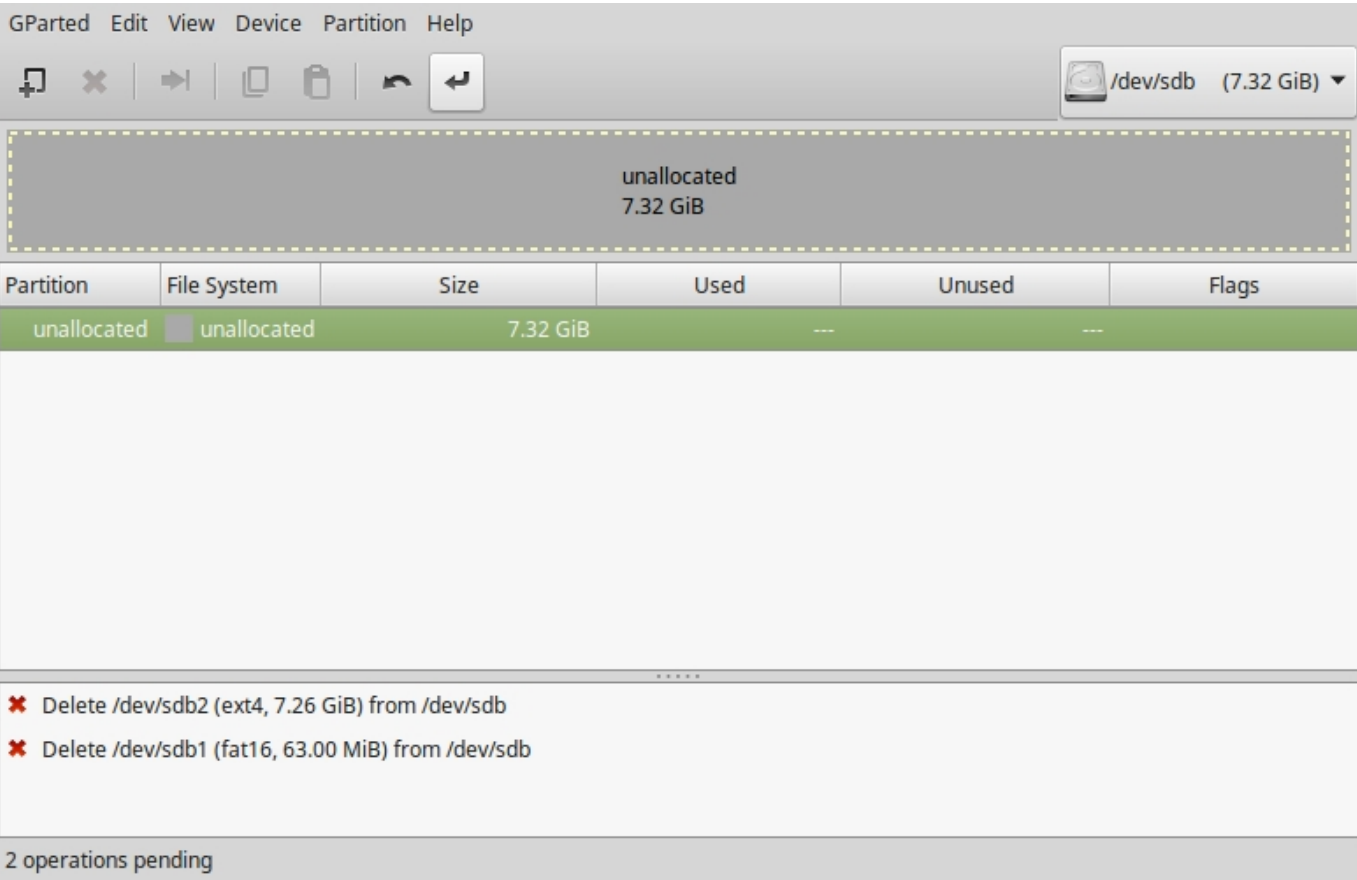
## Restore the SD Card

Remove your original SD Card from the Linux PC and insert the smaller size SD Card you wish to use. Before writing to it we need to remove any partitions that it contains.

Open gparted (select the correct storage device remember).



Right click on all the partitions and remove them (Select Delete).



Once all of the partitions are removed, we have to click the arrow at the top of the gparted interface to accept the changes (just under the word Help in the above image).

Accept any warnings and proceed. You now have a blank SD Card.

To restore your image, use the following from the command line:

```
sudo dd if=~/.rpi_all.img of=/dev/sdb bs=1M
```

This gave me the output:

```
2200+0 records in
2200+0 records out
2306867200 bytes (2.3 GB, 2.1 GiB) copied, 460.966 s, 5.0 MB/s
```

Note the time taken: 2306867200 bytes (2.3 GB, 2.1 GiB) copied, **460.966 s**, 5.0 MB/s. This process took nearly 10 minutes, it's very slow so be patient.

Remove the SD Card from the Linux PC and put it in to the Raspberry Pi.

## The Raspberry Pi

If all has worked, the Raspberry Pi should now boot up. Once booted and logged in, we can check the partition sizes.

From the command line, use:

```
df -h
```

This will show the following:

Filesystem	Size	Used	Avail	Use%	Mounted on
/dev/root	2.0G	1.1G	880M	54%	/
devtmpfs	214M	0	214M	0%	/dev
tmpfs	218M	0	218M	0%	/dev/shm
tmpfs	218M	4.4M	213M	3%	/run
tmpfs	5.0M	4.0K	5.0M	1%	/run/lock
tmpfs	218M	0	218M	0%	/sys/fs/cgroup
/dev/mmcblk0p1	63M	21M	43M	34%	/boot

We can see from the /dev/root line above that the size is reported as 2.0G and that 880M is available. This is an 8Gb SD Card, and we need to reclaim that extra space. To do this, from the command line enter:

```
sudo raspi-config
```

```
df -h Filesystem Size Used Avail Use% Mounted on /dev/root 7.2G 1.1G 5.9G 15% / devtmpfs 214M 0 214M 0% /dev tmpfs 218M 0 218M 0% /dev/shm tmpfs 218M 4.4M 213M 3% /run tmpfs 5.0M 4.0K 5.0M 1% /run/lock tmpfs 218M 0 218M 0% /sys/fs/cgroup /dev/mmcblk0p1 63M 21M 43M 34% /boot
```

From:  
<http://cameraangle.co.uk/> - WalkerWiki - [wiki.alanwalker.uk](http://wiki.alanwalker.uk)

Permanent link:  
[http://cameraangle.co.uk/doku.php?id=copy\\_larger\\_sd\\_card\\_to\\_smaller\\_sd\\_card&rev=1485641312](http://cameraangle.co.uk/doku.php?id=copy_larger_sd_card_to_smaller_sd_card&rev=1485641312)

Last update: **2023/03/09 22:35**

