

License Page

To either get the license details (.lic) or to add a new license (.lif and .sli) you need to access the license page of the MFLE.

To find this page, add the following at the end of your MFLE IP Address:

```
http://x.x.x.x/Updater
```

Updater Page

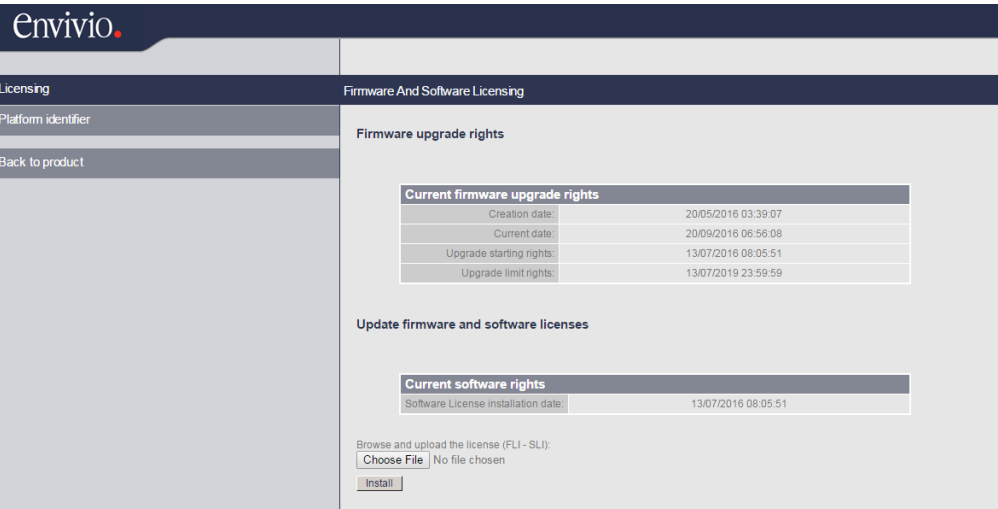
You will see the following page



This gives you three options...

Licensing

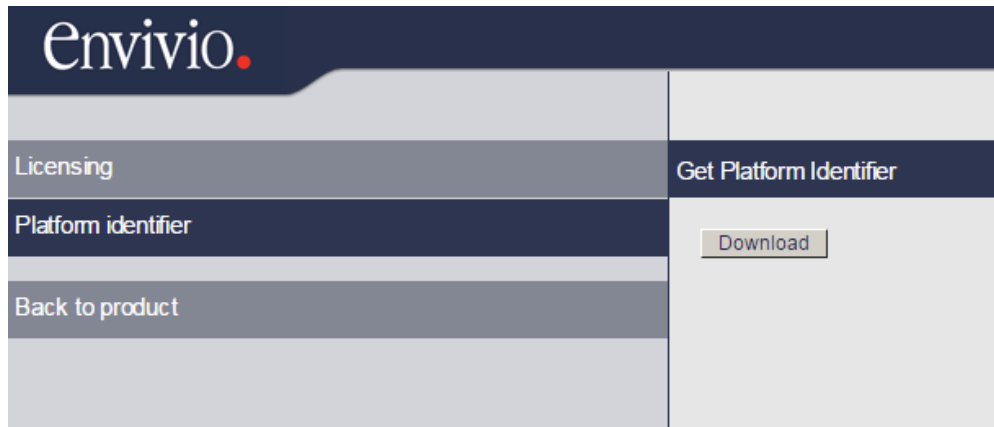
This page is where licenses can be added (or indeed removed, but by adding a new file).



The licenses normally come as two files, a .fli and .sli files, they both need to be uploaded, and in the correct order (.fli then .sli).

Platform Identifier

The Platform Identifier page is where we need to get the details of the unit.



Click the download button and you will download a .lif file. This file needs to be used to generate the .fli and .sli files that are used to license the encoder.

Back to Product

From:

<http://cameraangle.co.uk/> - WalkerWiki - wiki.alanwalker.uk

Permanent link:

http://cameraangle.co.uk/doku.php?id=wiki:license_page&rev=1474380755

Last update: **2023/03/09 22:35**

