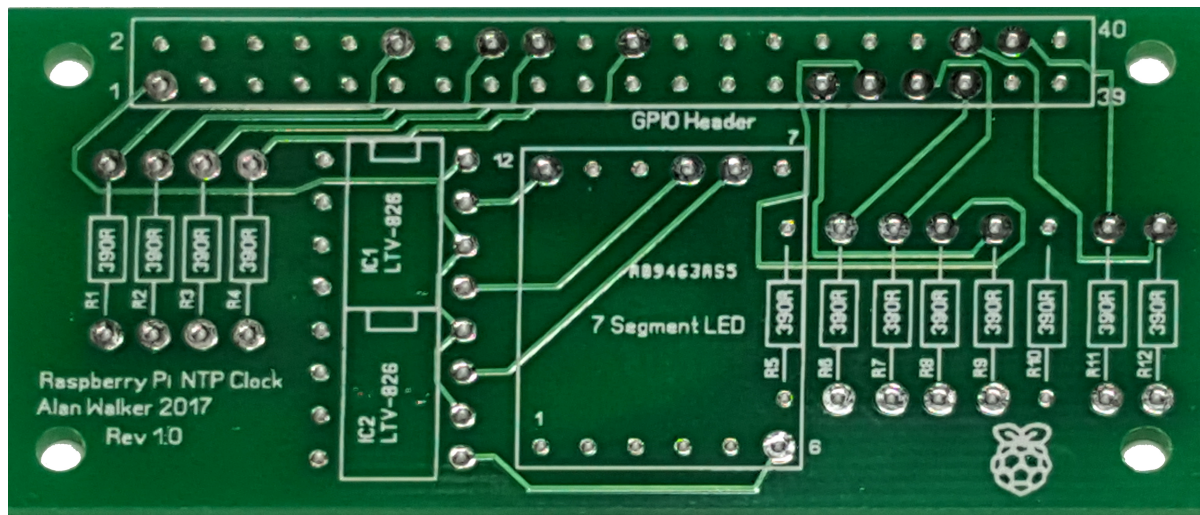


Printed Circuit Photos

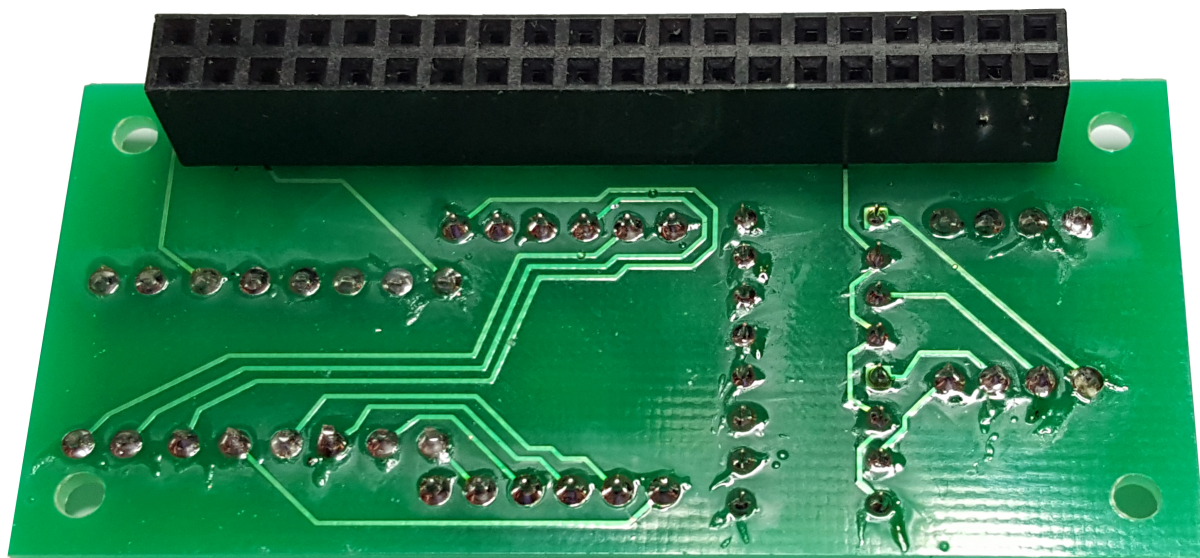
Mar 2017

Please bear in mind the current PCB revision is **v3.1**. This is due to errors found in the early builds (mostly to do with hole sizes). Once the **v3.1** boards have arrived and been tested, I will upload those photos here.

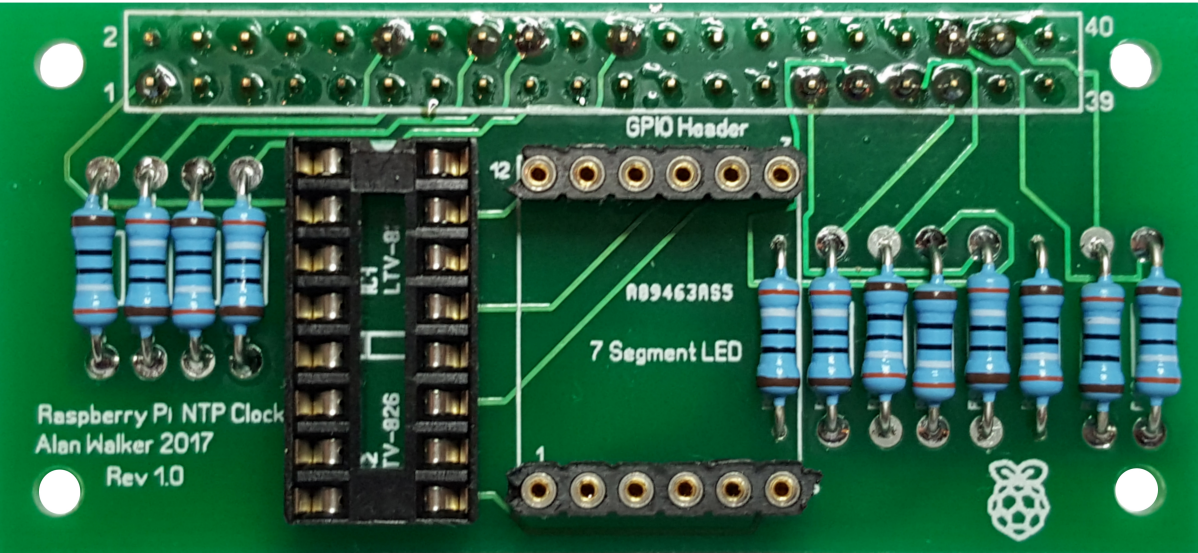
The Bare PCB



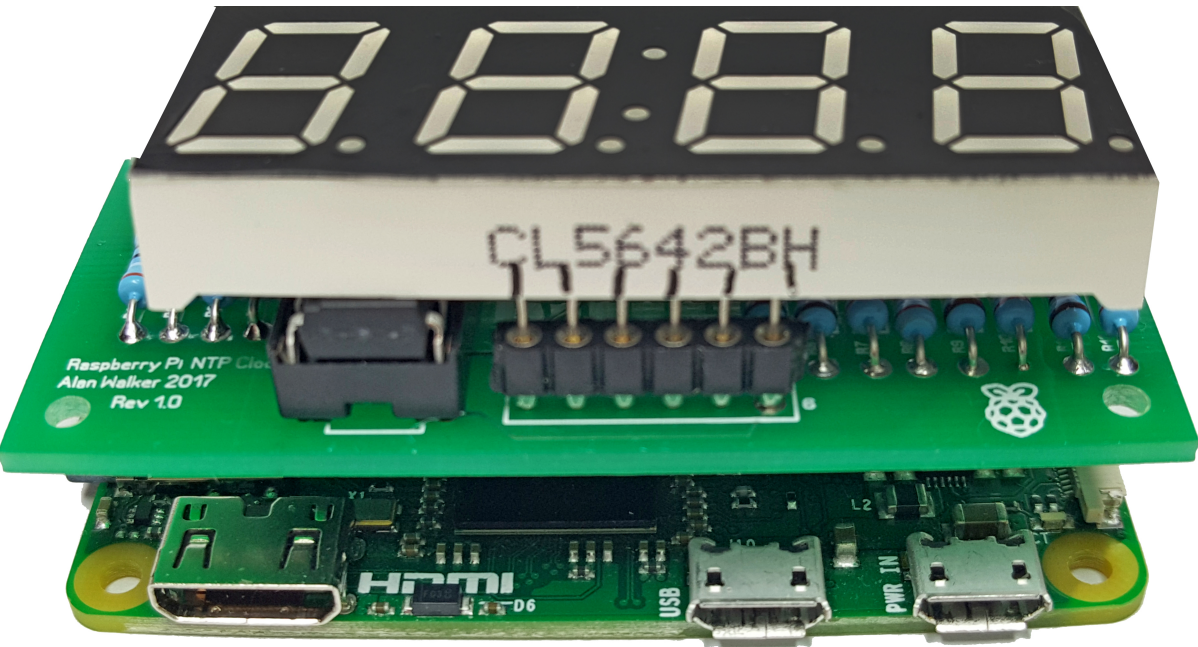
PBC Bottom with 40W Header



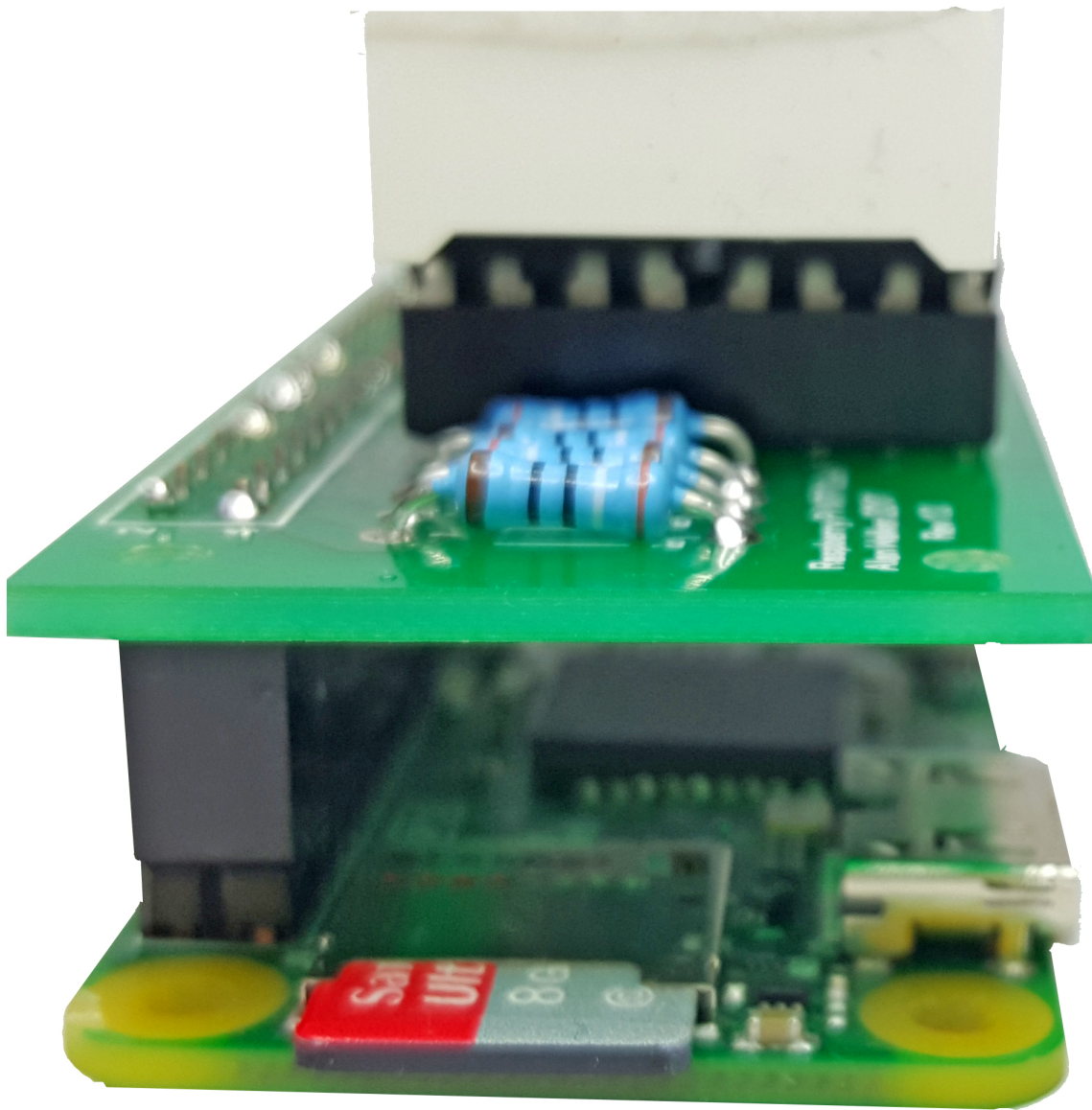
PCB Top with IC Sockets and Resistors



PCB with 7 Segment LED attached to Raspberry Pi Zero



PCB Side View with 7 Segment LED attached to Raspberry Pi Zero



From:
<http://cameraangle.co.uk/> - WalkerWiki - wiki.alanwalker.uk

Permanent link:
http://cameraangle.co.uk/doku.php?id=printed_circuit_photos&rev=1490618045

Last update: **2023/03/09 22:35**

