

Circuit Diagrams and PCBs

Mar 2017

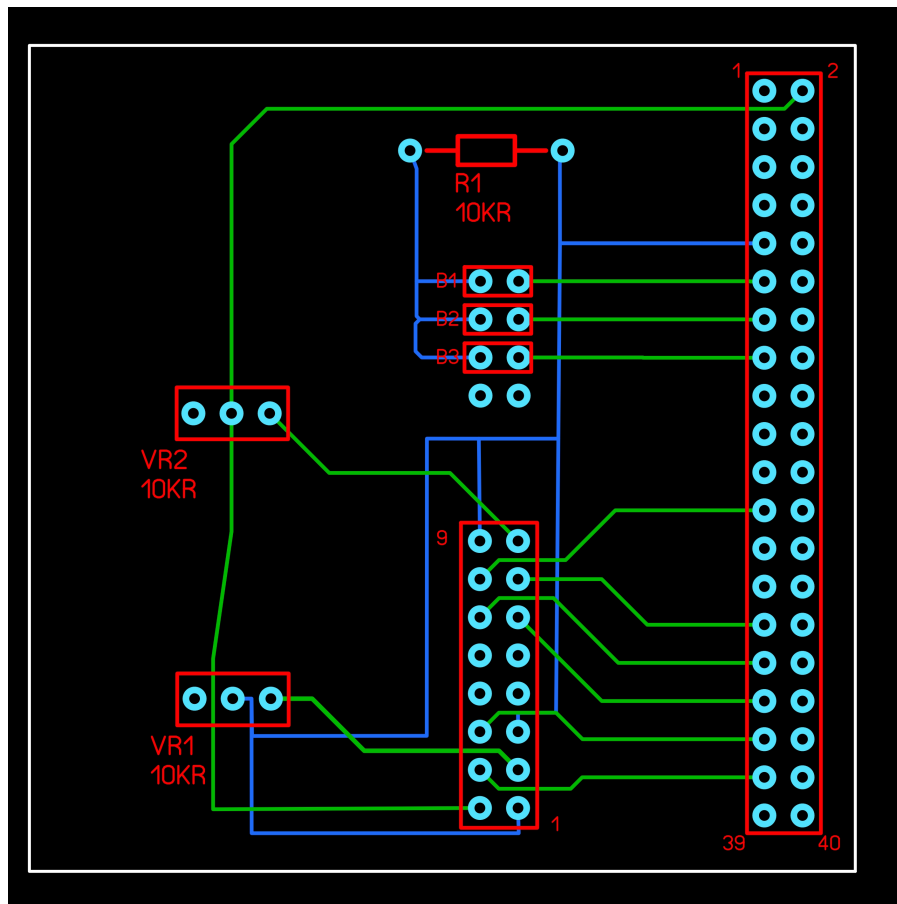
Original PCB

Below is the original PCB for this project, I have had some of these made and they work perfectly.

You can [download the PCB and Gerber files](#)

HERE

. If you are using a Raspberry Pi 1/2/3 then this PCB is fine, it will also work on a Raspberry Pi Zero, but there is a better PCB for that below.



From:
<http://cameraangle.co.uk/> - WalkerWiki - wiki.alanwalker.uk

Permanent link:
http://cameraangle.co.uk/doku.php?id=circuit_diagrams_and_pcb&rev=1489249825

Last update: 2023/03/09 22:35

